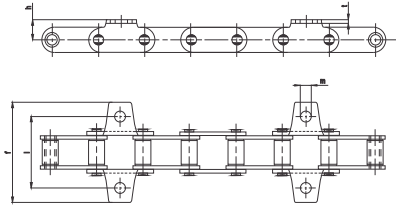


AGRICULTURAL ROLLER CHAINS



INDUSTRY STANDARD STRAIGHT PLATES

'K' ATTACHMENTS

Chain No.	TIDC Att. No.	Attachments	Dimensions					Fig. No.
		Outer	l	f	m	h	t	
38.4R	K1	✓	58.00	76.50	8.50	15.10	2.40	1
	K2	✓	58.00	80.50	9.20	15.40	2.40	2
	K3	✓	58.00	76.50	10.50	15.10	2.40	1
	K4	✓	58.00	77.00	8.50	11.20	2.40	3
	K5	✓	57.00	87.30	8.50	16.00	2.40	4
	K6	✓	57.00	74.00	8.40	11.00	2.40	2
	K7	✓	57.00	80.50	8.40	15.40	2.40	2
	K8	✓	57.00	85.00	10.60	16.00	2.40	5
	KA	✓	57.00	76.00	8.60	13.00	2.90	5
	KB	✓	58.00	80.05	8.60	15.40	2.40	2
	KC	✓	57.00	74.00	6.60	11.00	2.40	2
	KE	✓	57.00	85.00	9.10	16.80	2.40	5
	KF	✓	57.00	78.50	9.00	16.00	2.40	2
	KH	✓	57.00	85.00	9.00	17.00	2.90	4
38.4V	K1	✓	57.00	75.00	8.50	15.10	2.90	1
	K2	✓	57.50	81.50	9.00	15.40	2.90	2
	K3	✓	57.00	75.00	10.55	15.10	2.90	1
	K4	✓	58.00	77.00	8.50	11.20	2.90	3
38.4VB	K1	✓	58.00	87.00	10.55	14.00	2.90	1
	K2	✓	57.00	86.00	10.60	14.00	2.90	7
38.4VB-1	K6	✓	58.00	87.00	10.50	13.00	3.25	8
CA627	K1	✓	56.00	84.00	10.60	16.80	2.90	5
CA550V	K1	✓	54.00	76.50	8.50	12.70	2.90	2
	K6	✓	57.00	78.00	10.60	14.20	2.90	8
	K7	✓	54.00	76.50	8.50	12.70	2.90	6
S55VD	K1	✓	58.00	76.00	9.00	16.00	2.90	2
S55SK2	K1	✓	56.00	81.00	8.50	15.00	2.90	2
	K2	✓	56.00	77.40	8.60	14.80	2.90	5
CA550H	K1	✓	51.00	75.50	8.33	16.50	2.90	2
	K2	✓	54.00	83.00	8.70	12.70	2.90	6
U 4140F	K1	✓	54.00	85.00	8.60	14.80	2.90	5
U 40001	K1	✓	56.00	83.50	11.10	15.00	2.90	7

'M' Attachments are also available



INNER LINK



OUTER LINK



CONNECTING LINK
SECURED WITH SPLIT PIN



CONNECTING LINK
SECURED WITH WIRE

Above spares are available for all models

'K' ATTACHMENTS

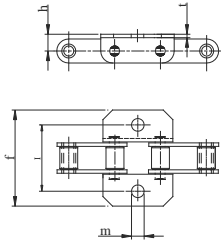


Fig. 1

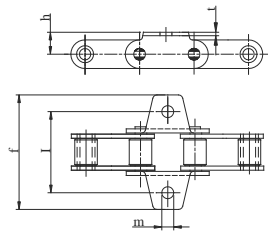


Fig. 2

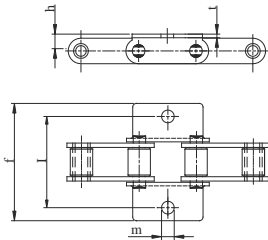


Fig. 3

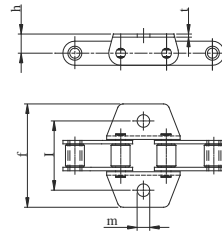


Fig. 4

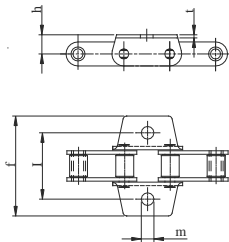


Fig. 5

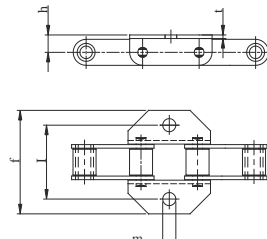


Fig. 6

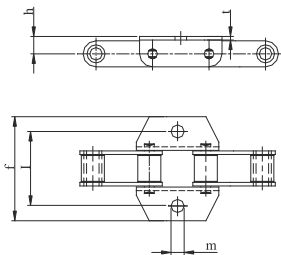


Fig. 7

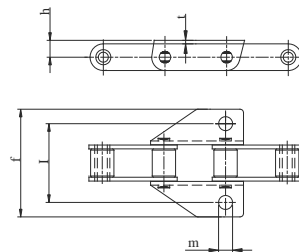


Fig. 8